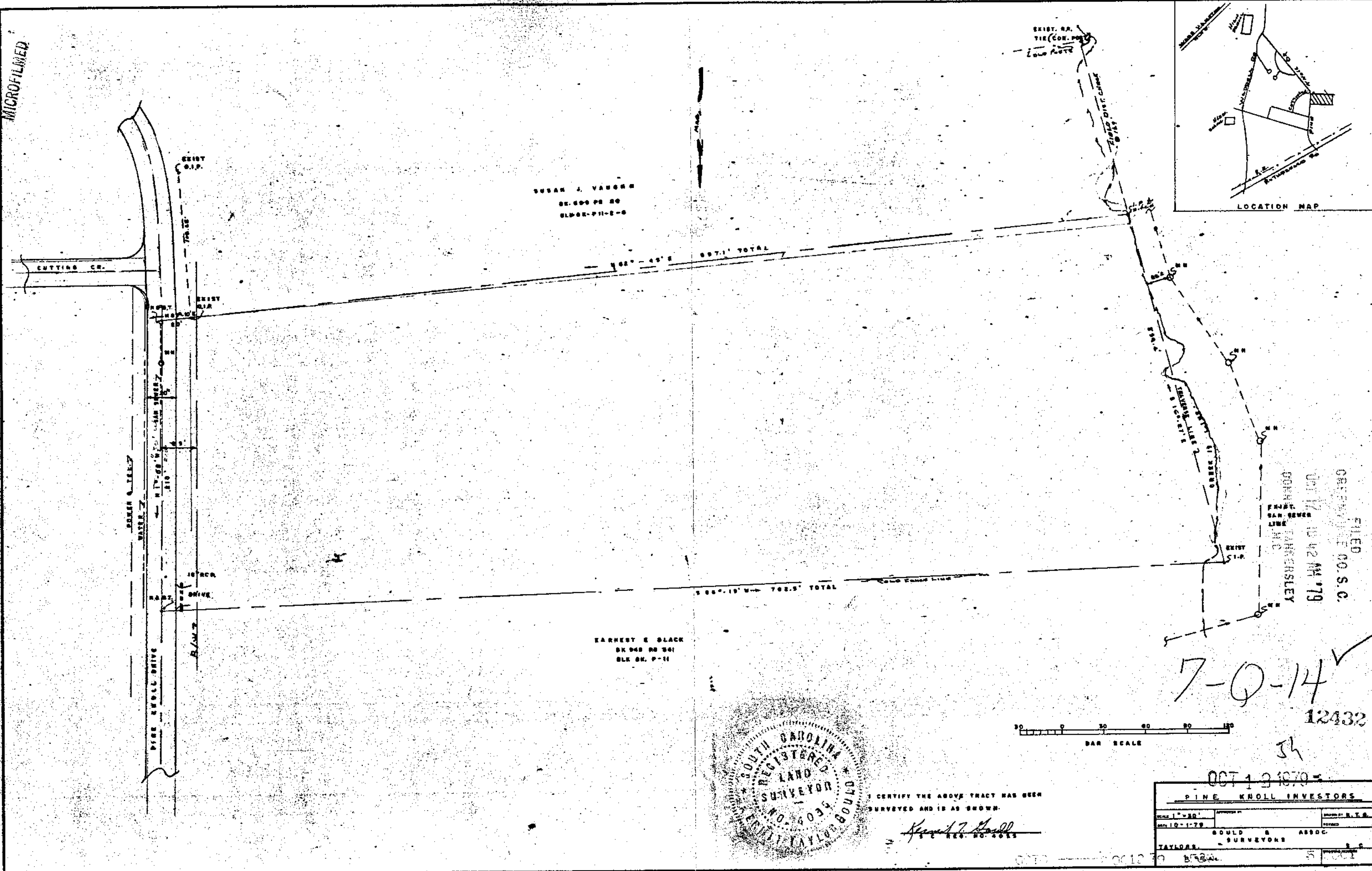
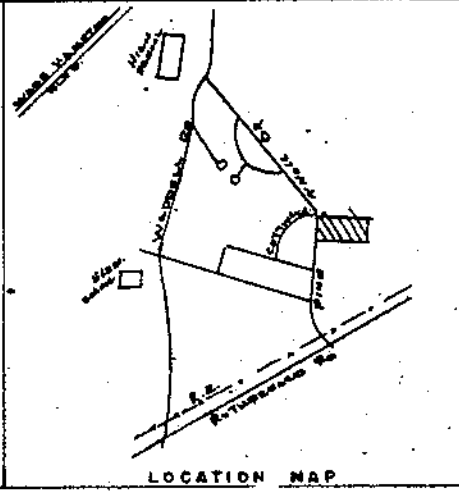


MICROFILMED



SUSAN J. VAUGHN
 BK. 600 PG. 20
 BLK. 711-E-8

EARNEST E. SLACK
 BK. 948 PG. 361
 BLK. 8K. P-11



FILED
 OCT 17 10 42 AM '79
 JOHN T. TANNERSLEY
 SURVEYOR
 M.C.

7-9-14 ✓
 12432
 JH



I CERTIFY THE ABOVE TRACT HAS BEEN SURVEYED AND IS AS SHOWN.

Ernest E. Slack
 S.C. REG. NO. 2035



OCT 19 1979

PINE KNOLL INVESTORS	
SCALE 1" = 20'	DATE 10-1-79
BY JOHN T. TANNERSLEY SURVEYOR	